



Kaake House and
The Cherry House (70's)



Highway 27 south
standing just north
of the King Rd.



Mini Mart Plaza (1991) Hwy 27 East Side
North of King Rd



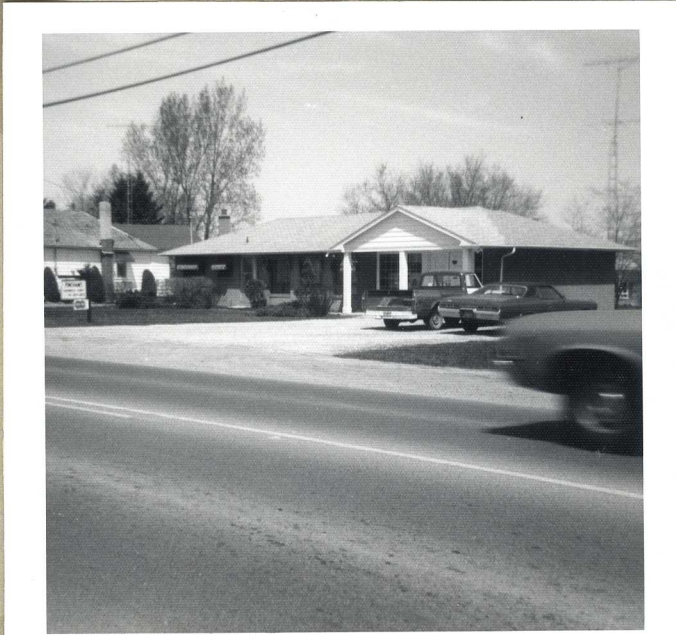
Hwy 27 ~~west~~ east side



Hwy 27 west side



Left. William Rose wife Margaret & son Harold in 1912
Right 1993



Fincham's Harness Store 1975

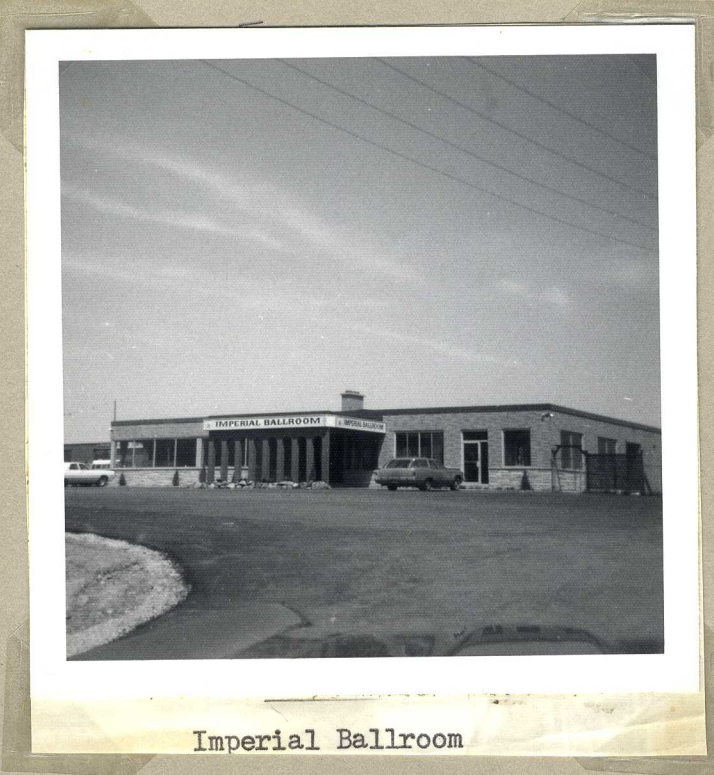


NOBLETON TRAVEL 1991



MACTIQUES GIFTS AND FLOWERS
corner of Hy 27 and Wilson

Commercial area just north of Hill Farm Road



Imperial Ballroom



1991

