

WHAT WE HEARD FROM YOU

"A life line! Especially in trying, isolated times, staff could not be more helpful or productive (successful) to my many requests. I appreciate all you do because reading gives us someplace to go, when we have to stay where we are and KTPL makes it all possible. Thank you!"

"Welcoming, great programs for children and youth, somewhat limited resources - would be nice to have better availability and access"

"Excellent small town libraries that have excellent choices considering size. Love that its in my neighbourhood and close enough to walk. Staff are excellent!!"

Feedback provided by participants in our Community Consultation Survey 2021/22

DO YOU WANT TO LEARN MORE?

King City Branch

1970 King Rd.,
King City, ON L7B 1K9
905-833-5101

Nobleton Branch

8 Sheardown Dr.,
Nobleton, ON LOG 1N0
905-859-4188

Ansnoeveldt Self-Service Pickup & Returns

18997 Dufferin St.,
Ansnoeveldt, ON L3Y 4V9
905-833-5101

Schomberg Branch

77 Main St.,
Schomberg ON LOG 1T0
905-939-2102



Find Us
www.kinglibrary.ca



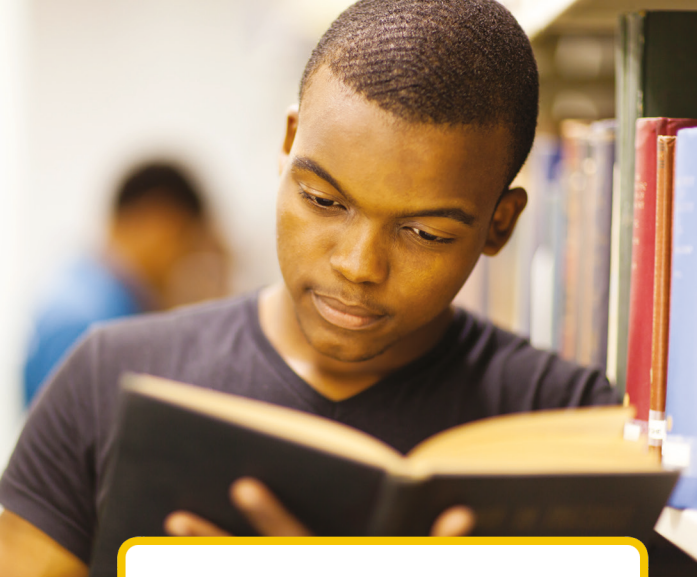
King Township Public Library

Strategic Plan

2023

To

2026



PRIORITIES AND STRATEGIC OBJECTIVES

“HOW WILL WE SUCCEED?”



VISION: “WHY DO WE EXIST?”

Access to information opens doors



MISSION: “WHAT DO WE DO?”

Provide access to information, entertainment, and community spaces



STATEMENT OF VALUES: “HOW DO WE BEHAVE?”

WELCOMING

Equitable and accessible to all

HELPFUL

Knowledgeably connect people to what they seek

FRIENDLY

A warm greeting and responsive service



- Provide programming opportunities for all ages
- Have the right staff, in the right positions, with the right skills
- Develop relevant collections and innovative formats

- Start conversations – inside the library and out in the community
- Raise awareness of library services through effective marketing
- Nurture existing partnerships and cultivate new ones

- Create welcoming, functional environments, both physical and digital
- Balance hours of operation to optimize use
- Explore new opportunities for library service points

